

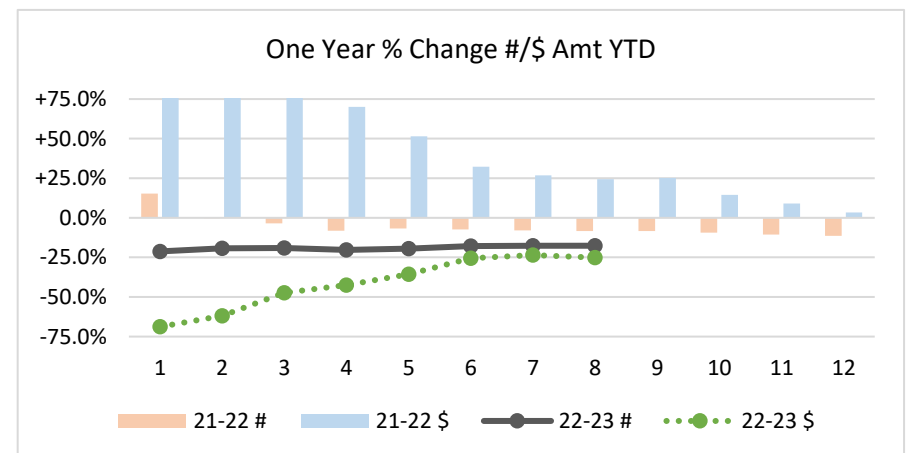
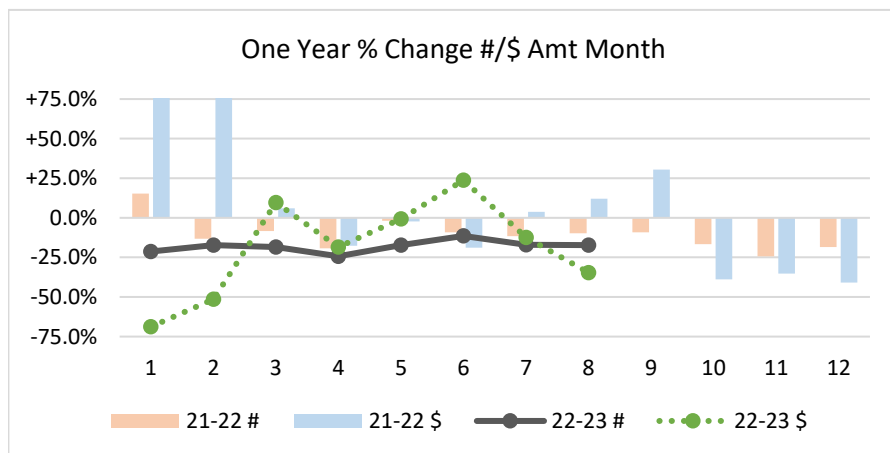
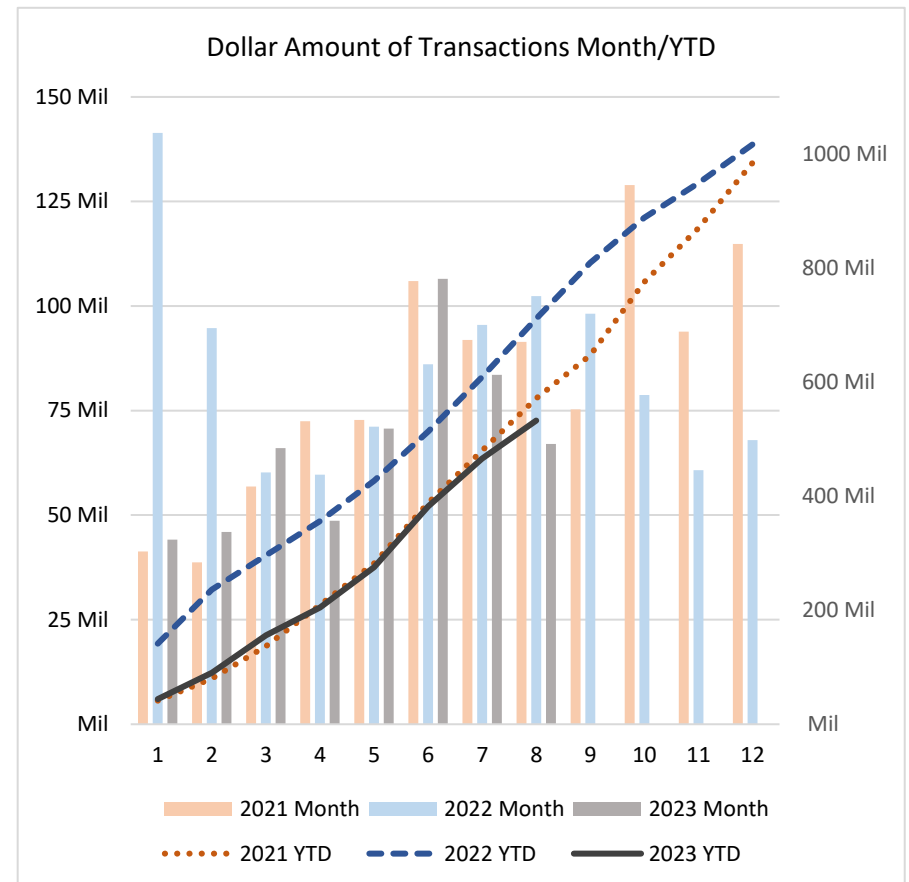
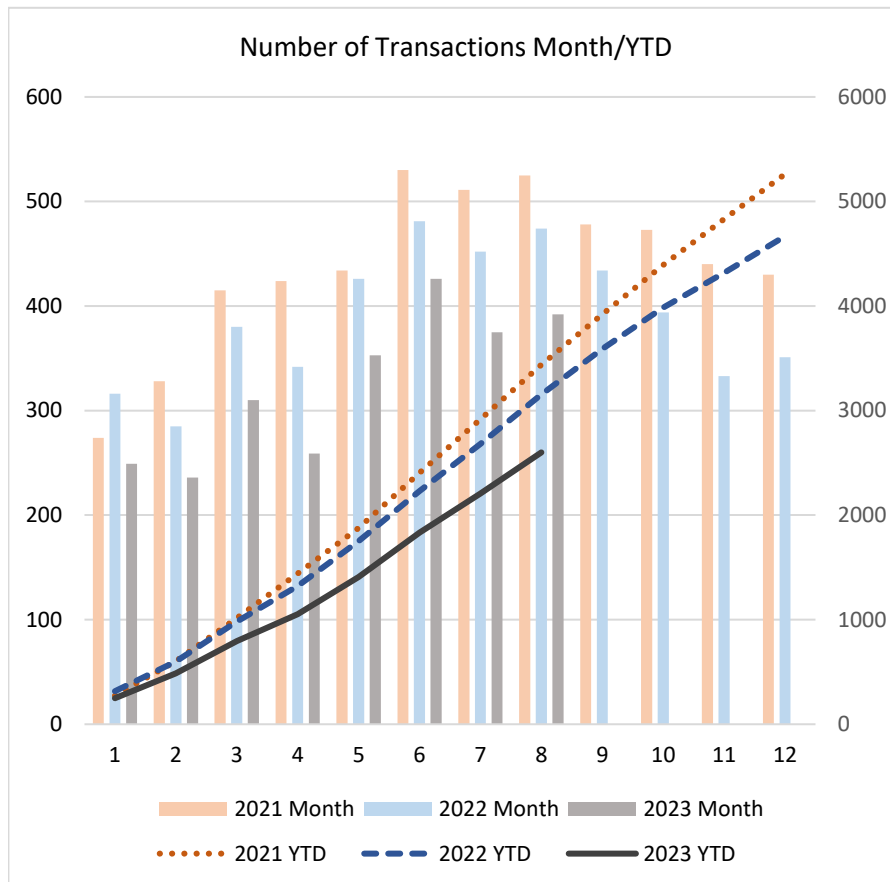
GREATER ERIE BOARD OF REALTORS®

2023 PROPERTY TRANSFER REPORTS PER MONTH & YEAR-TO DATE

COMPARISON OF NUMBER OF TRANSACTIONS & DOLLAR AMOUNT OF TRANSACTIONS INCLUDES ERIE COUNTY PROPERTIES ON WHICH TRANSFER TAX WAS PAID

ALL DATA FROM THE DAILY RECORD DEEMED RELIABLE BUT NOT GUARANTEED

		2021		2022		2023		2021		2022		2023	
		PER MONTH	1 YR % CHG	PER MONTH	1 YR % CHG	PER MONTH	1 YR % CHG	YTD	1 YR % CHG	YTD	1 YR % CHG	YTD	1 YR % CHG
JAN	#	274	-0.4%	316	+15.3%	249	-21.2%	274	-0.4%	316	+15.3%	249	-21.2%
	\$	\$41,333,280	+9.0%	\$141,361,776	+242.0%	\$44,118,209	-68.8%	\$41,333,280	+9.0%	\$141,361,776	+242.0%	\$44,118,209	-68.8%
FEB	#	328	+25.2%	285	-13.1%	236	-17.2%	602	+12.1%	601	-0.2%	485	-19.3%
	\$	\$38,676,781	+21.0%	\$94,752,502	+145.0%	\$45,996,894	-51.5%	\$80,010,061	+14.5%	\$236,114,278	+195.1%	\$90,115,103	-61.8%
MAR	#	415	+37.9%	380	-8.4%	310	-18.4%	1017	+21.4%	981	-3.5%	795	-19.0%
	\$	\$56,850,818	+38.5%	\$60,218,661	+5.9%	\$66,000,031	+9.6%	\$136,860,879	+23.4%	\$296,332,939	+116.5%	\$156,115,134	-47.3%
APR	#	424	+68.3%	342	-19.3%	259	-24.3%	1441	+32.2%	1323	-8.2%	1054	-20.3%
	\$	\$72,426,682	+82.3%	\$59,700,135	-17.6%	\$48,648,773	-18.5%	\$209,287,561	+38.9%	\$356,033,074	+70.1%	\$204,763,907	-42.5%
MAY	#	434	+67.6%	426	-1.8%	353	-17.1%	1875	+39.0%	1749	-6.7%	1407	-19.6%
	\$	\$72,800,059	+78.8%	\$71,138,137	-2.3%	\$70,662,876	-0.7%	\$282,087,620	+47.4%	\$427,171,211	+51.4%	\$275,426,783	-35.5%
JUN	#	530	+44.0%	481	-9.2%	426	-11.4%	2405	+40.1%	2230	-7.3%	1833	-17.8%
	\$	\$105,982,903	+70.7%	\$86,059,554	-18.8%	\$106,498,398	+23.7%	\$388,070,523	+53.1%	\$513,230,765	+32.3%	\$381,925,181	-25.6%
JUL	#	511	-3.0%	452	-11.5%	375	-17.0%	2916	+29.9%	2682	-8.0%	2208	-17.7%
	\$	\$91,917,869	+8.9%	\$95,452,968	+3.8%	\$83,572,608	-12.4%	\$479,988,392	+42.1%	\$608,683,733	+26.8%	\$465,497,789	-23.5%
AUG	#	525	+2.9%	474	-9.7%	392	-17.3%	3441	+24.9%	3156	-8.3%	2600	-17.6%
	\$	\$91,436,072	+15.6%	\$102,409,434	+12.0%	\$66,998,178	-34.6%	\$571,424,464	+37.0%	\$711,093,167	+24.4%	\$532,495,967	-25.1%
SEP	#	478	-0.6%	434	-9.2%			3919	+21.1%	3590	-8.4%		
	\$	\$75,265,065	+2.1%	\$98,151,519	+30.4%			\$646,689,529	+31.8%	\$809,244,686	+25.1%		
OCT	#	473	-14.2%	394	-16.7%			4392	+16.0%	3984	-9.3%		
	\$	\$128,907,675	+51.0%	\$78,709,876	-38.9%			\$775,597,204	+34.6%	\$887,954,562	+14.5%		
NOV	#	440	+1.9%	333	-24.3%			4832	+14.6%	4317	-10.7%		
	\$	\$93,849,140	+31.8%	\$60,739,330	-35.3%			\$869,446,344	+34.3%	\$948,693,892	+9.1%		
DEC	#	430	-3.8%	351	-18.4%			5262	+12.8%	4668	-11.3%		
	\$	\$114,816,400	+63.7%	\$67,948,297	-40.8%			\$984,262,744	+37.2%	\$1,016,642,189	+3.3%		
AVG/MED PER MONTH THROUGH AUGUST													
		2021		2022		2023		2021		2022		2023	
AVG	#	430		395	-8.3%	325	-17.6%	1634		1630	-0.2%	1329	-18.5%
	\$	\$71,428,058		\$88,886,646	+24.4%	\$66,561,996	-25.1%	\$273,632,848		\$411,252,618	+50.3%	\$268,807,259	-34.6%
MED	#	429		403	-6.1%	332	-17.7%	1658		1536	-7.4%	1231	-19.9%
	\$	\$72,613,371		\$90,406,028	+24.5%	\$66,499,105	-26.4%	\$245,687,591		\$391,602,143	+59.4%	\$180,439,521	-53.9%



Data for Months 1 & 2 exceed +75%

Data for Months 1-3 exceed +75%